

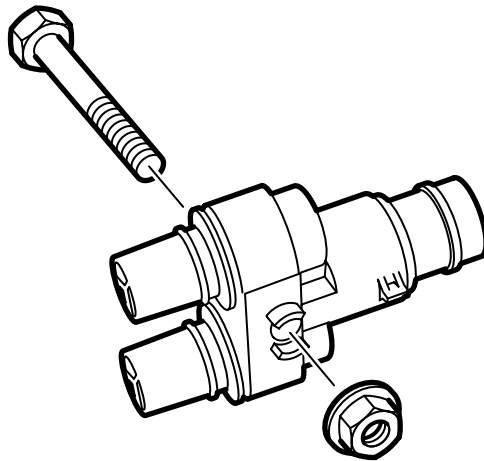


**MONTERINGSANVISNING · INSTALLATION INSTRUCTIONS
MONTAGEANLEITUNG · INSTRUCTIONS DE MONTAGE**

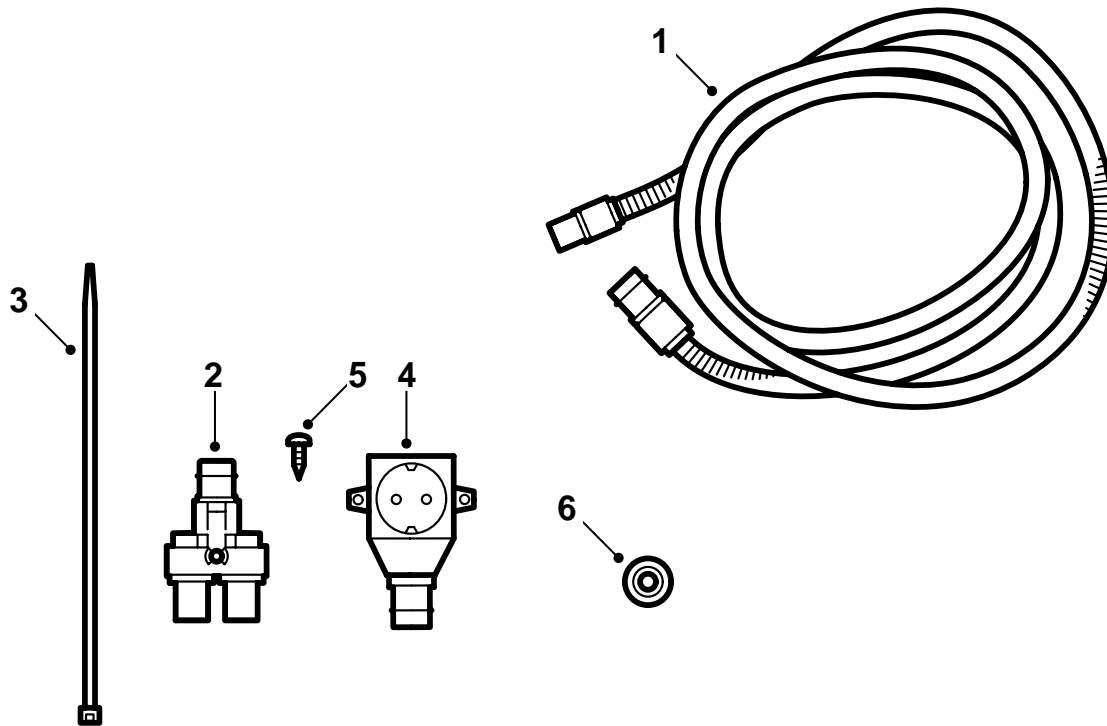
Saab 9-3 M03-

Branching lead kit

Accessories Part No.	Group	Date	Instruction Part No.	Replaces
32 025 770 32 026 191	9:87-40	Oct 07	12 788 443	12 788 443 Jan 06

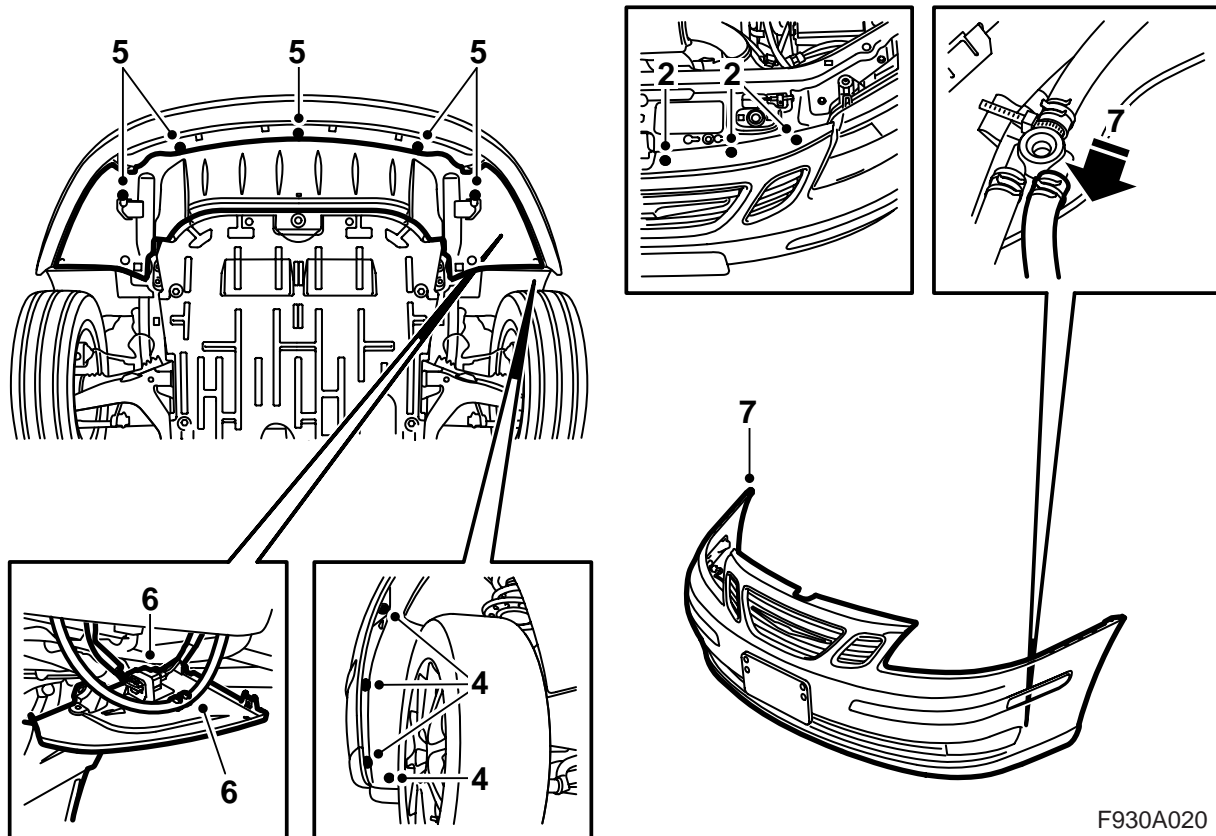


F930A043



F930A019

- 1 Extension cable 2.0 m
- 2 Extension cable 2.5 m
- 3 Branch connector
- 4 Bolt
- 5 Nut
- 6 Cable tie (x16)
- 7 230 V socket
- 8 Screw (x2)
- 9 Grommet



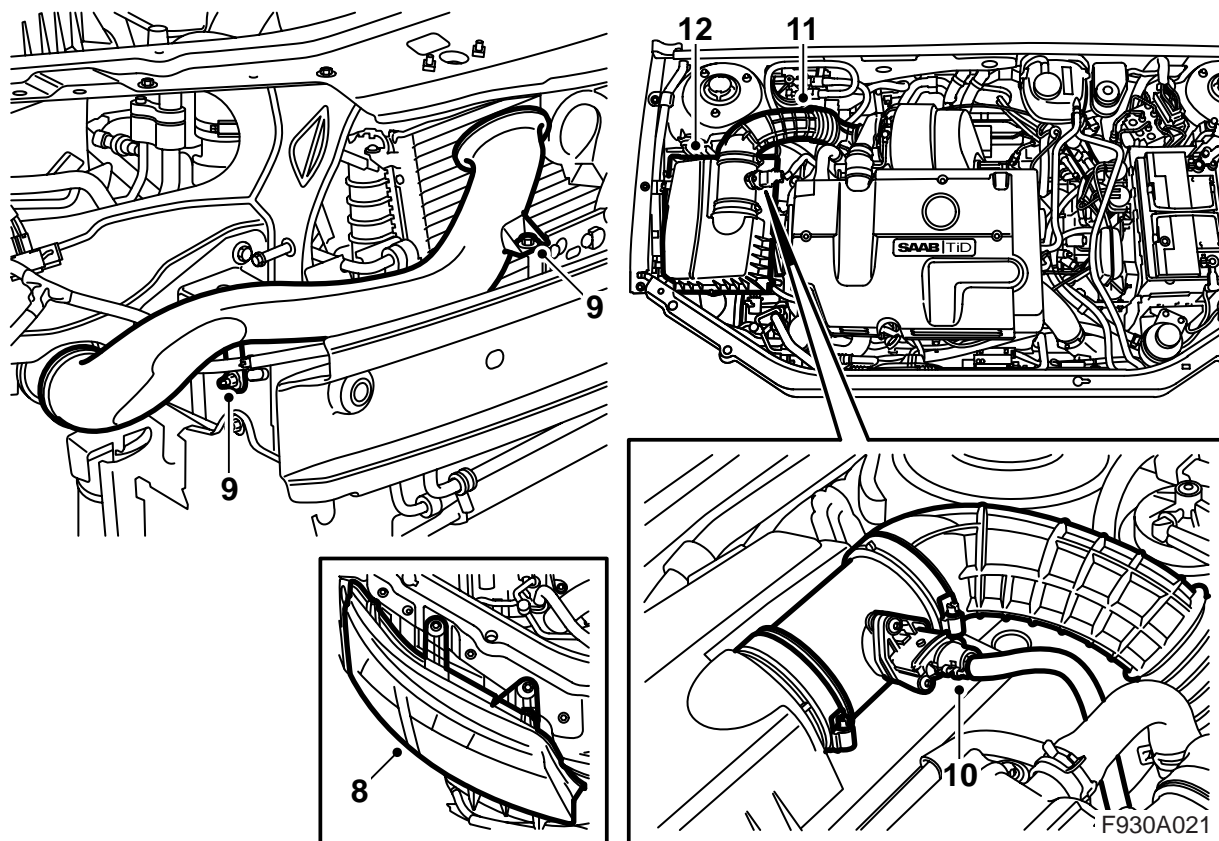
F930A020

- 1 Disconnect the negative battery cable.
- 2 Remove the bumper shell clip from the upper radiator member.
- 3 Raise the car.
- 4 Remove the bumper bolts in the wheel housing.
- 5 Remove the spoiler shield.
- 6 Unplug the bumper connector and remove it from the holder on the spoiler shield.

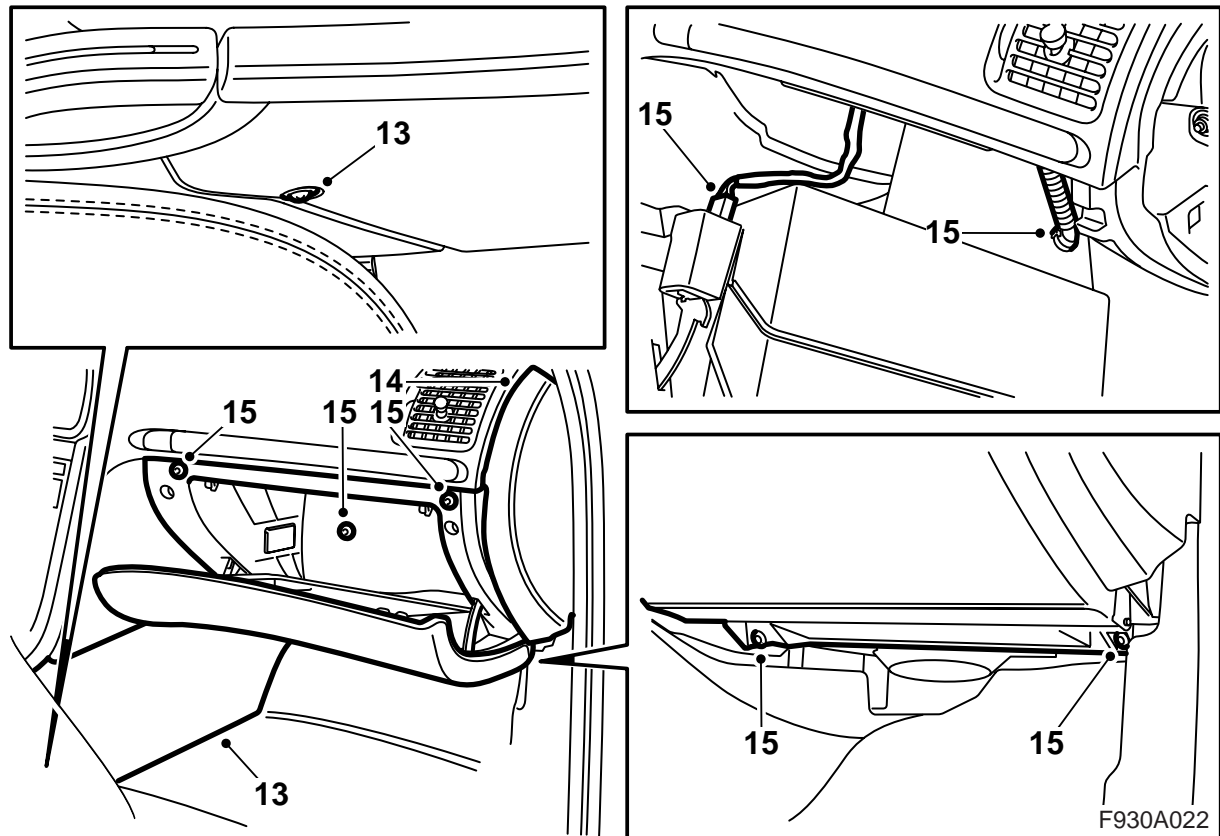
Cars with headlamp washers: Unhook the hose from the spoiler shield.

- 7 Lower the car, pull out the bumper shell side pieces and remove the bumper.

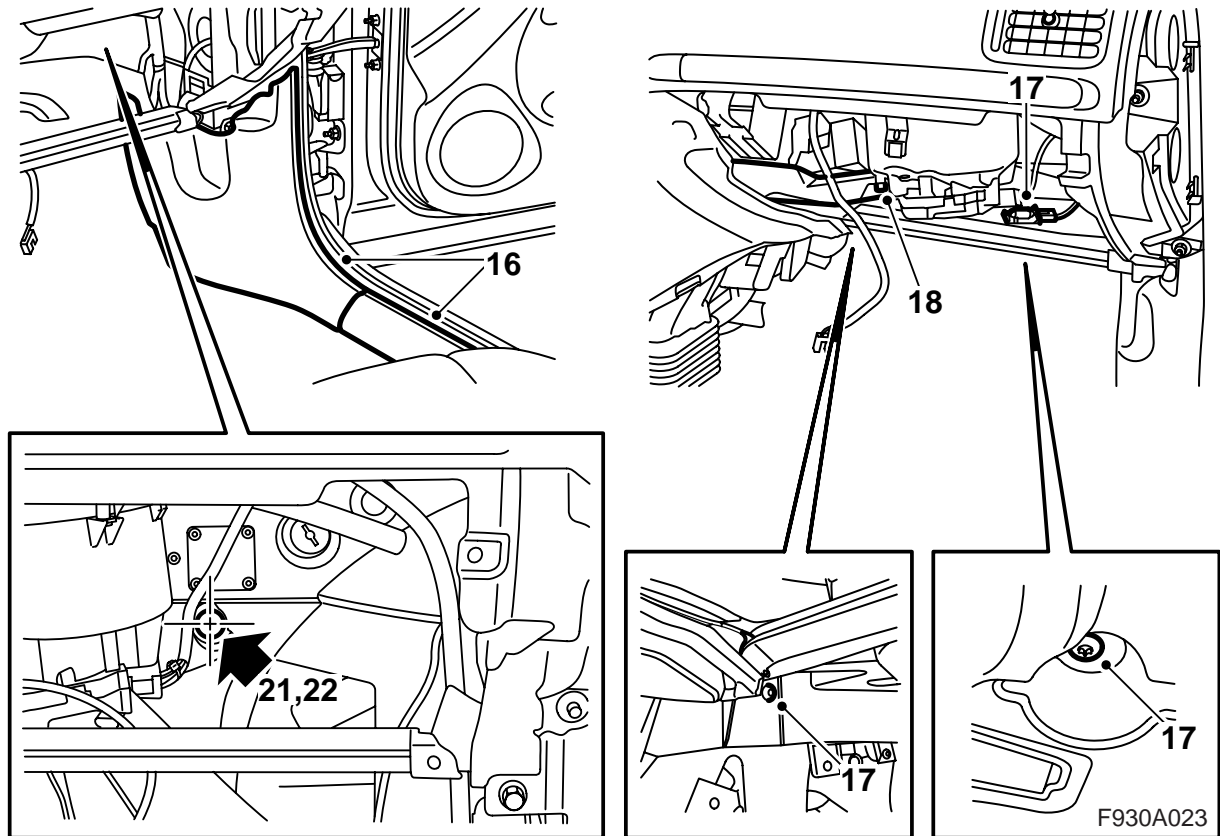
Cars with headlamp washers: Remove the hose from the branching piece and plug the hose with an 8.5 mm drill.



- 8 Remove the right-hand headlamp.
- 9 Remove the intake pipe.
- 10 Unplug the mass air flow sensor connector.
- 11 Remove the intake hose from the mass air flow sensor.
- 12 Remove the air cleaner.



- 13 Remove the floor console side trim.
- 14 Remove the right-hand end of the dashboard.
- 15 Remove the glove box, pull it out and unplug the connector for the lighting and the cooling hose if fitted.

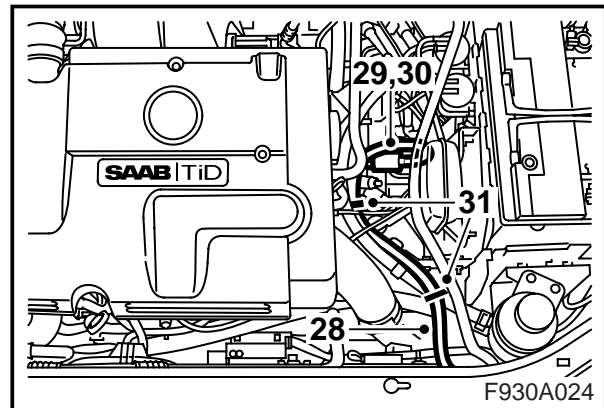
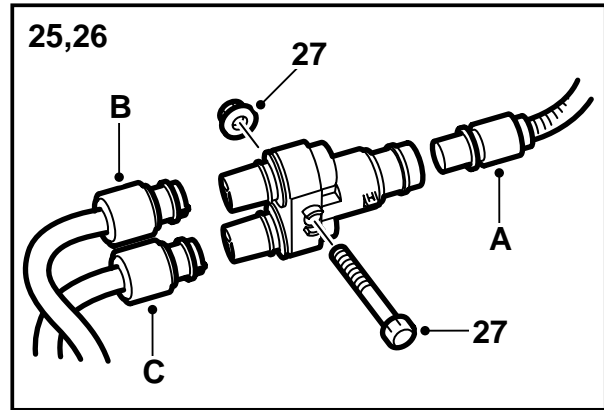
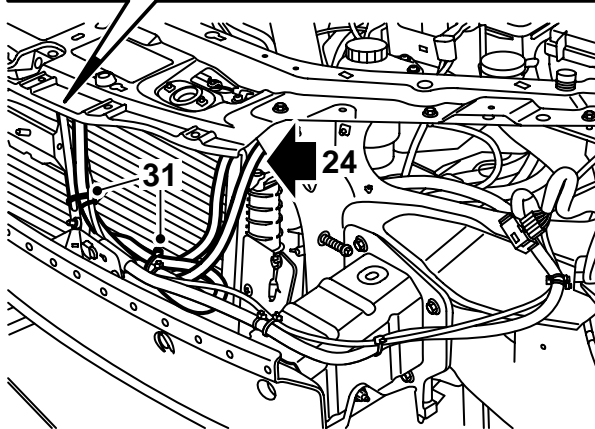
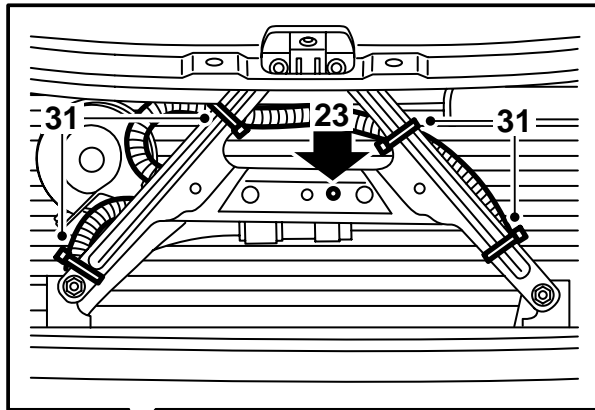


- 16 Remove the inner scuff plate and the A-pillar lower trim.
- 17 Unplug the floorwell lighting connector and remove the lower part of the glove box.
- 18 Remove the air duct.
- 19 Fold the carpet aside.

Important

Observe great care not to fold the carpet too much. If it cracks in the foam occur, the sound insulation will be impaired considerably.

- 20 Cut out a piece of the insulation mat to see where to drill the hole in the bulkhead (the area is indicated by the arrow 21,22 in the illustration).
- 21 Draw a cross in the round impression on the bulkhead with a marker pen. Centre punch the centre of the cross.
- 22 Drill a 3 mm hole in the mark first and then use a 22 mm hole saw.

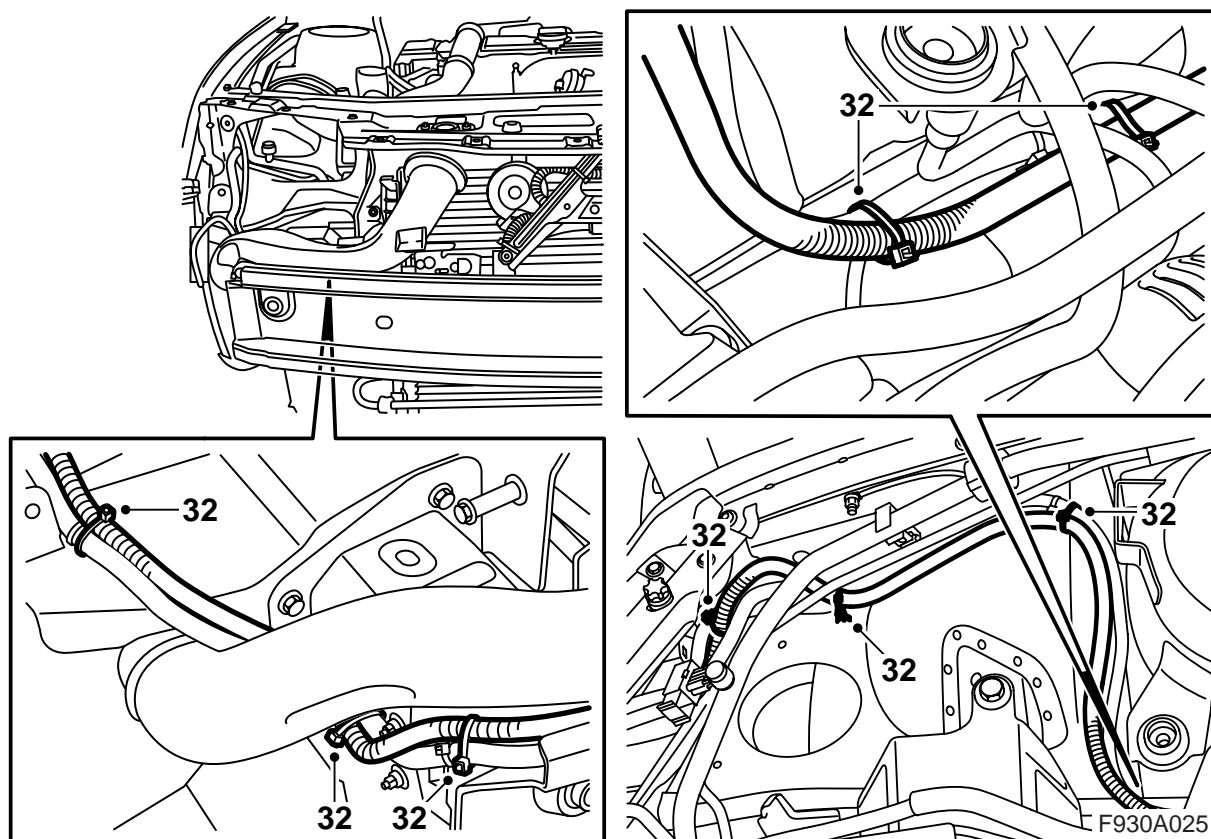


- 23 Drill a 6 mm hole in the horn bracket for the branch connector.

⚠ WARNING

Pay attention so that the car's wiring harness is not damaged. Damage to the wiring harness may cause short circuits/fire.

- 24 **If the car has previously been equipped with an engine block heater:** Remove the connecting cable from the engine block heater and pull back the cable to the upper radiator member without undoing the cable tie. Run the connector cable under the radiator member between the left-hand headlamp and the radiator.
- 25 Plug the connecting cable into the branch connector (A).
- 26 Connect the 2.0 m extension cable for the engine block heater to the branch connector (B) and the 2.5 m extension cable for the cabin wall socket to the branch connector (C).
- 27 Fit the branch connector to the horn bracket with the connector spacer heels against the bracket and fit the screw with their heads facing the radiator. The extension cable connected to the branch connector B socket must be placed above the branch connector.
- 28 Run the 2.0 m extension cable along the connecting cable between the left-hand headlamp and the radiator, along the power steering hose and up to the engine block heater.
- 29 Apply non-acidic Vaseline, part no. 30 15 286, or equivalent to the connecting cable O-ring and plug the cable into the engine block heater.
- 30 Fit the lock clip over the connection. A click should be heard when the lock clip is fitted correctly.
- 31 Secure the extension cable with cable ties together with the connecting cable. Bend the cable evenly at the engine block heater so that it can absorb engine movement. Secure any excess extension cable behind the bumper member next to the horn bracket.



- 32 Run the 2.5 m extension cable into the cabin along the impact sensor wiring harness on the bumper member, under the AC pipes, along the wiring harness around the strut tower and into the cabin through the hole drilled in the bulkhead. Secure with cable ties.
- 33 Fit the cable grommet onto the extension cable from the cabin side.

Note

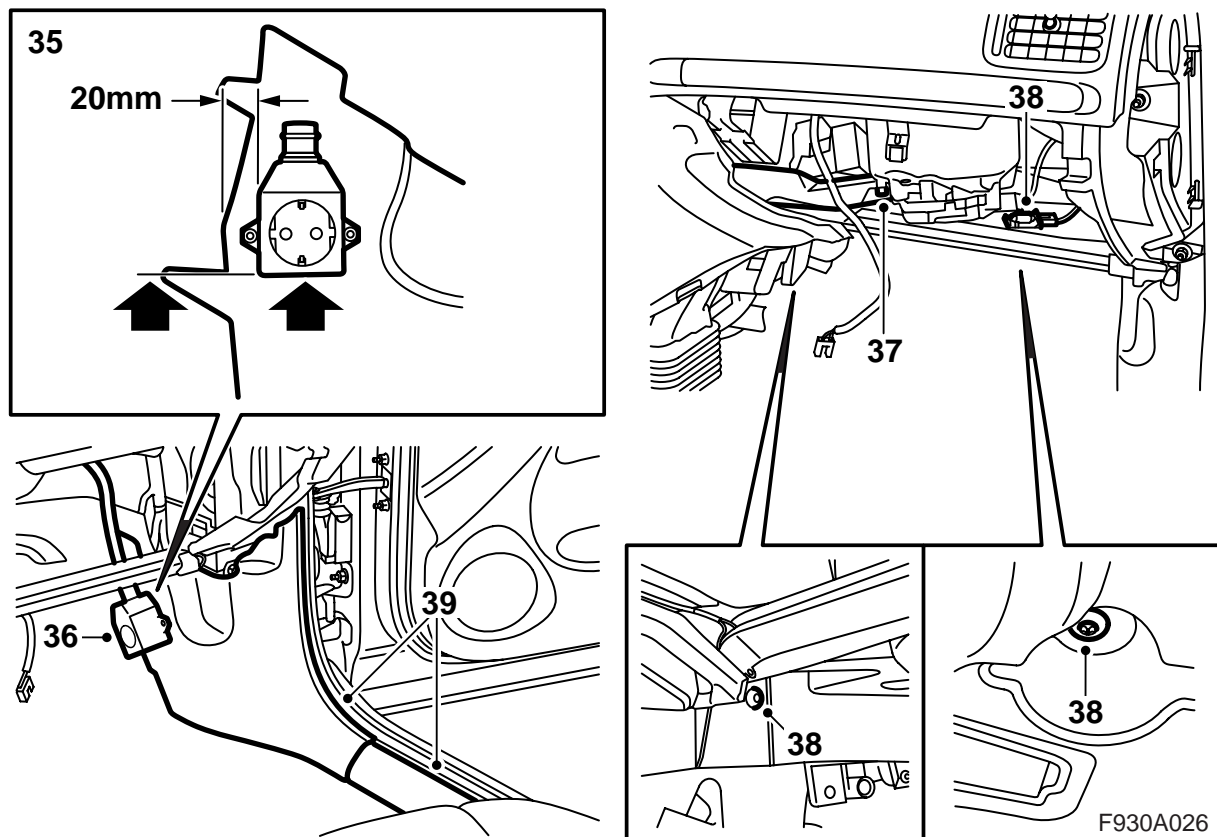
A soap solution will facilitate fitting.

Place the cable grommet about 400 mm from the connector inside the car.

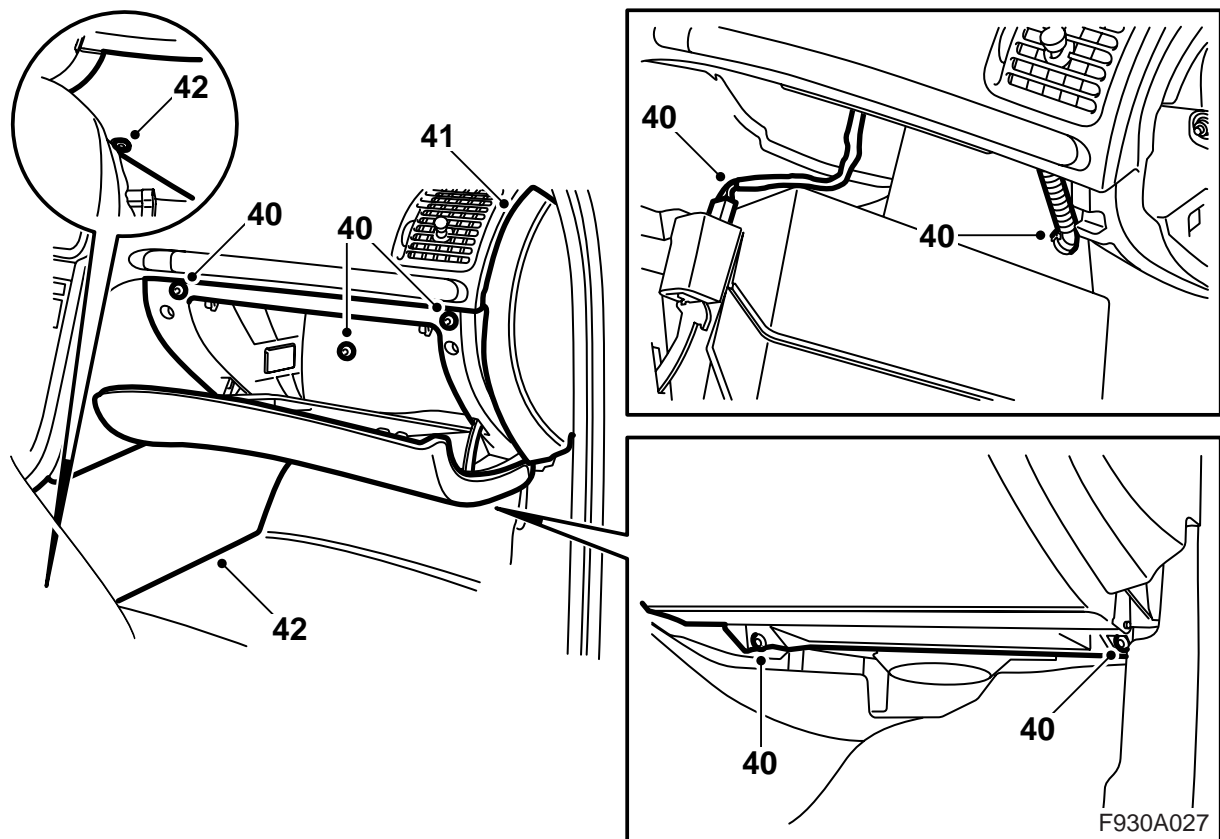
Important

Make sure the cable grommet seals against the bulkhead.

- 34 Bend the carpet back into place.



- 35 Mark out the position for the cabin wall socket on the A-pillar lower trim using the socket as a template. The socket must be located 20 mm from the edge with the bottom edge of the socket in line with the top edge of the lower guide pin. Drill two 3 mm holes and fit the cabin wall socket.
- 36 Apply non-acidic Vaseline, part no. 30 15 286, or equivalent to the extension cable O-ring and connect the cable to the socket.
- 37 Fit the air duct.
- 38 Fit the lower part of the glove box and connect the floorwell lighting.
- 39 Fit the A-pillar lower trim and the inner scuff plate.



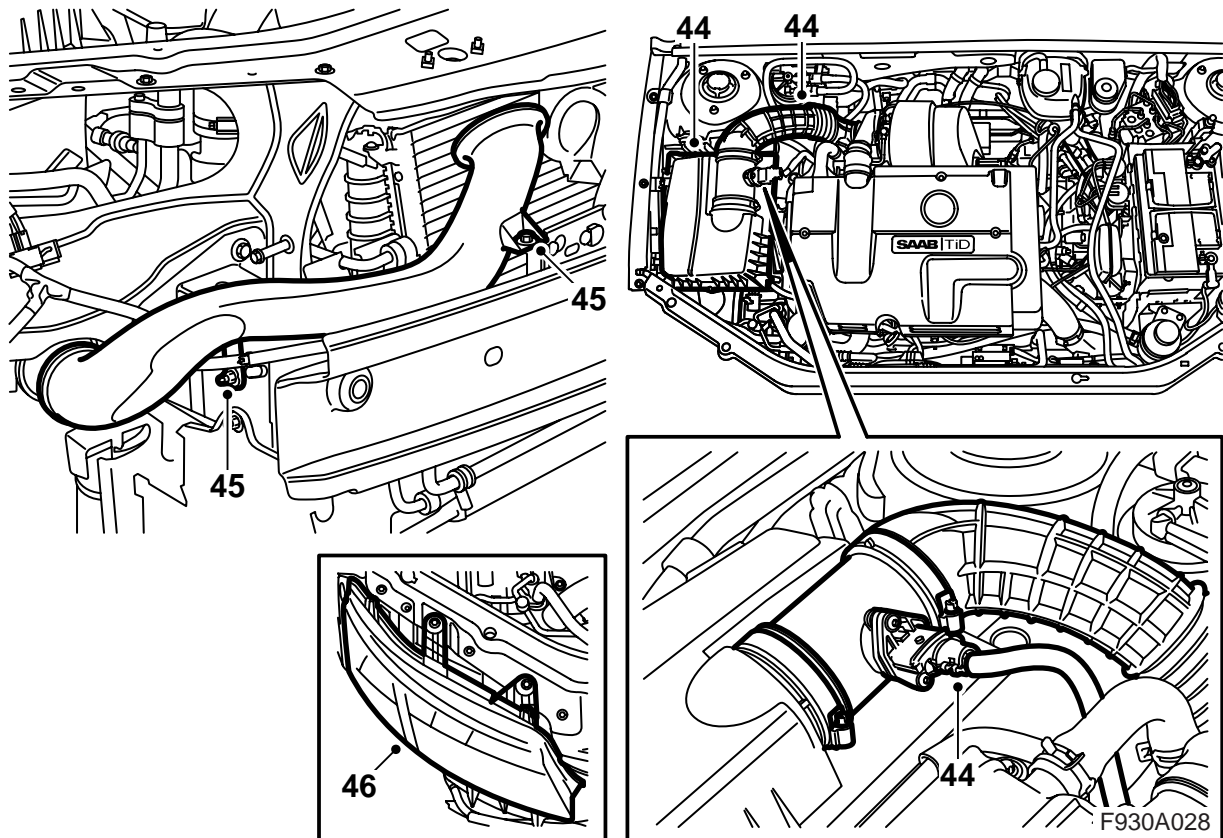
- 40 Position the glove box, plug in the lighting connector and connect the cooling hose where appropriate. Fit the glove box.
- 41 Fit the right-hand end of the dashboard.
- 42 Fit the floor console side trim.
- 43 Plug the engine block heater into a wall socket and check that the heater starts. Unplug the connection to the wall socket.

If a timer relay is being fitted:

Proceed to step 59.

If a timer relay is not being fitted:

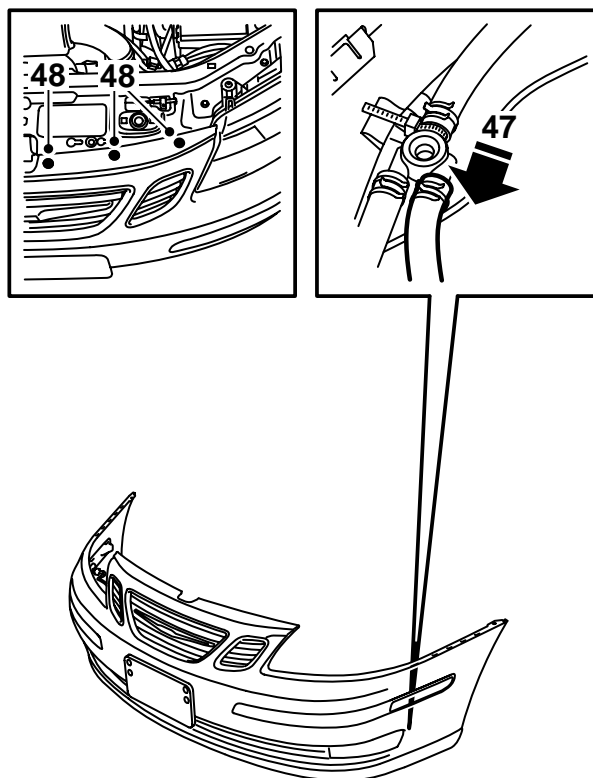
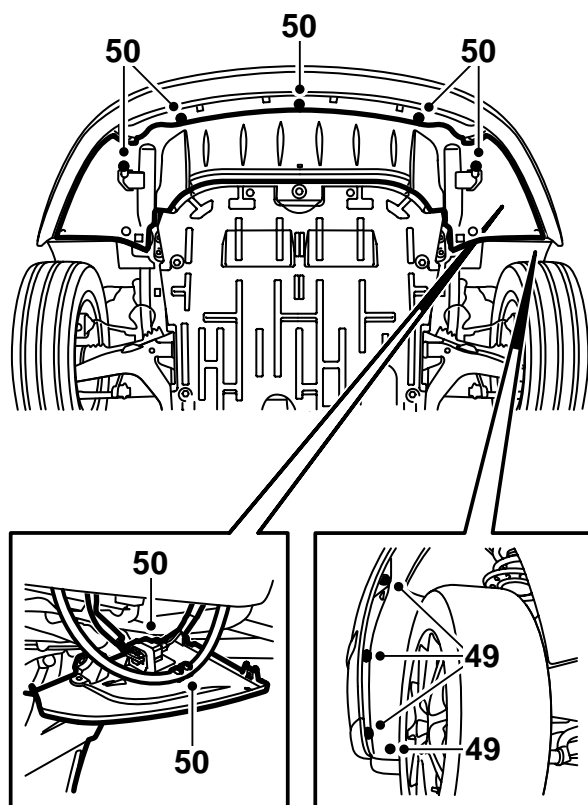
Proceed to step 44.



44 Fit the air cleaner and connect the intake hose and plug in the mass air flow sensor.

45 Fit the intake pipe.

46 Connect and fit the headlamp.



F930A029

47 Lift up the bumper.

⚠ WARNING

Check that the wiring harness is not pinched. Incorrect fitting can damage the wiring harness and cause a short-circuit/fire.

Cars with headlamp washers: Connect the headlamp washer hose to the branching piece.

All: Position the bumper and press back the shell so that it fastens on the holder mounting.

48 Fit the clip on the upper radiator member.

49 Raise the car and fit the bumper bolts in the wheel housing.

50 Lift up the spoiler shield, fit the bumper connector into the holder and plug in the connector.

Cars with headlamp washers: Hook the hose onto the spoiler shield.

All: Fit the spoiler shield.

51 Lower the car and check the fit of the bumper.

52 Connect the battery negative cable. Adjust the time and date.

53 Synchronise remote control code by inserting the key into the ignition.

54 Activate window lift pinch protection function by operating the side windows up and down twice. An audible confirmation will sound when activation is complete.

55 **Cars with headlamp washers:** Check the operation of the headlamp washers.

56 **Cars with timer relay:** Connect the diagnostic tool, select car and model year, select "All", select "Add/Remove", select the accessory and select "Add".

Note

Occasionally, the diagnostic tool is required to procure a security code from TIS. Information regarding the appropriate procedures will be shown in the diagnostic tool display.

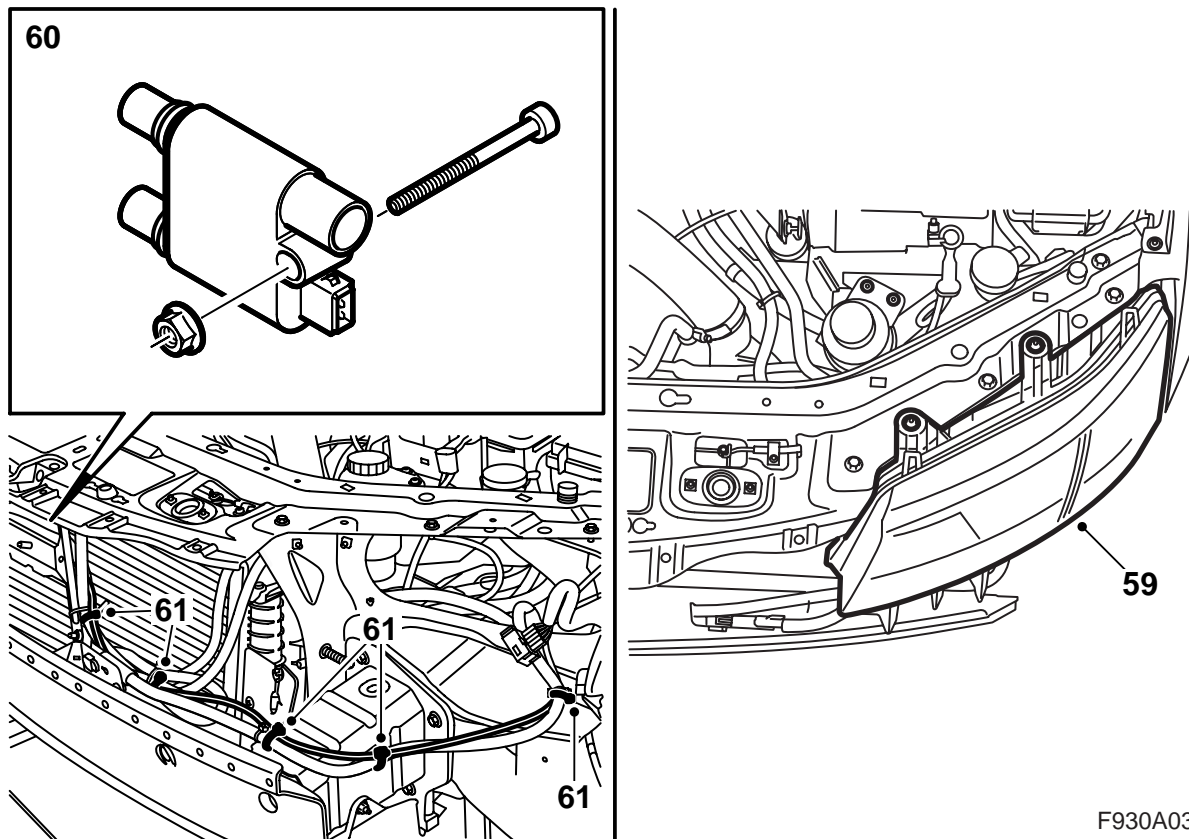
57 Connect the engine block heater to a wall socket.

58 Press the SIDC button "CUSTOMIZE", select "Engine block heater", press "SET", select "Manual control", press "SET", select "Heater on", press "SET" and make sure the engine block heater starts.

Select "Manual control", press "SET", select "Heater off", press "SET", select "Back" and "Finish".

Important

Repeat this procedure with all keys. Otherwise, the remote controls will not function.

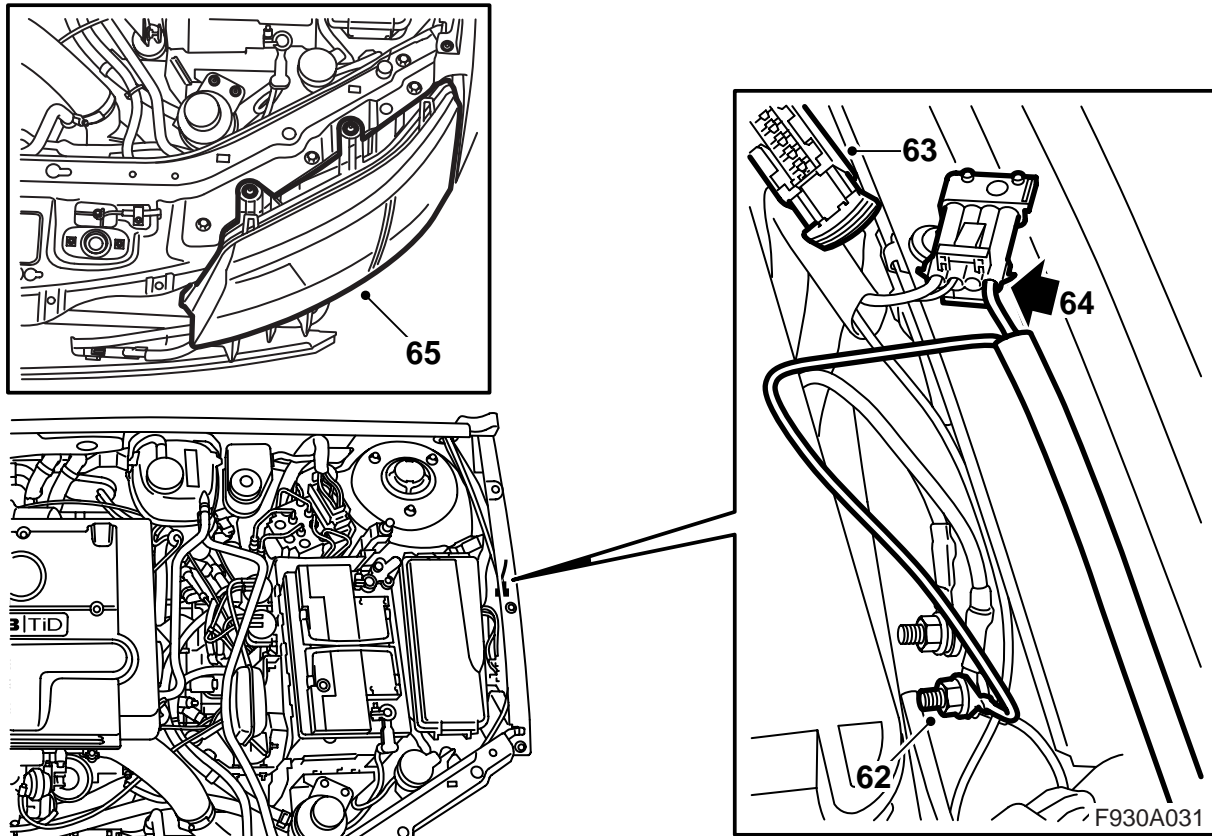


F930A030

- 59 **If a timer relay is being fitted:** Remove the left-hand headlamp.
- 60 Replace the branch connector with the timer relay.
- 61 Connect the wiring harness to the timer relay, run the wiring harness along the connecting cable and then let it follow the horn wiring harness down to the bumper member and then the impact sensor wiring harness. Secure the timer relay wiring harness at the same points and the impact sensor wiring harness (5 off).

Important

The timer relay wiring harness must be placed next to the impact sensor wiring harness in the opening for the headlamp.



- 62 Connect the ground cable to the front grounding point (G30A) at the engine bay main fuse box.
- 63 Locate the "Pre Acc" socket between the engine bay main fuse box and the front wing and remove any adhesive tape or blank connections.
- 64 Connect the wiring harness to the four-pole "Pre Acc" socket.

Note

If the four-pole "Pre Acc" socket is already used, connect into the existing connector as follows:

- Unplug "Pre Acc".
- Remove the seal from the timer relay connector wiring harness and extract the cable.
- Insert the cable into the connector that was plugged into "Pre Acc", position 4.
- Plug the connector into "Pre Acc".

- 65 Connect and fit the left-hand headlamp.

WARNING

Check that the wiring harness is not pinched. Incorrect fitting can damage the wiring harness and cause a short-circuit/fire.

- 66 Proceed to step 44.

User instructions

- The extension cable must be made of oil-resistant rubber and approved for outdoor use with a cross-sectional area of at least 3x1.5 mm².
- The heater system may only be connected to a grounded socket.
- Handle all cables with care. Pay particular attention to the risk of pinching between the bonnet and the body of the car and the risk of cuts on sharp metal components.

 **WARNING**

Check the ground connection between the connecting cable ground pin, the heater casing and the car body regularly to prevent electric shocks.

- Inspect regularly the extension cable for damage or ageing. Damaged cables must be renewed immediately.

Note

The function of the heater will be at risk if:

- there are impurities in the coolant
- the coolant level is too low or if there is air in the system
- there is ice slush in the system
- radiator sealant is used